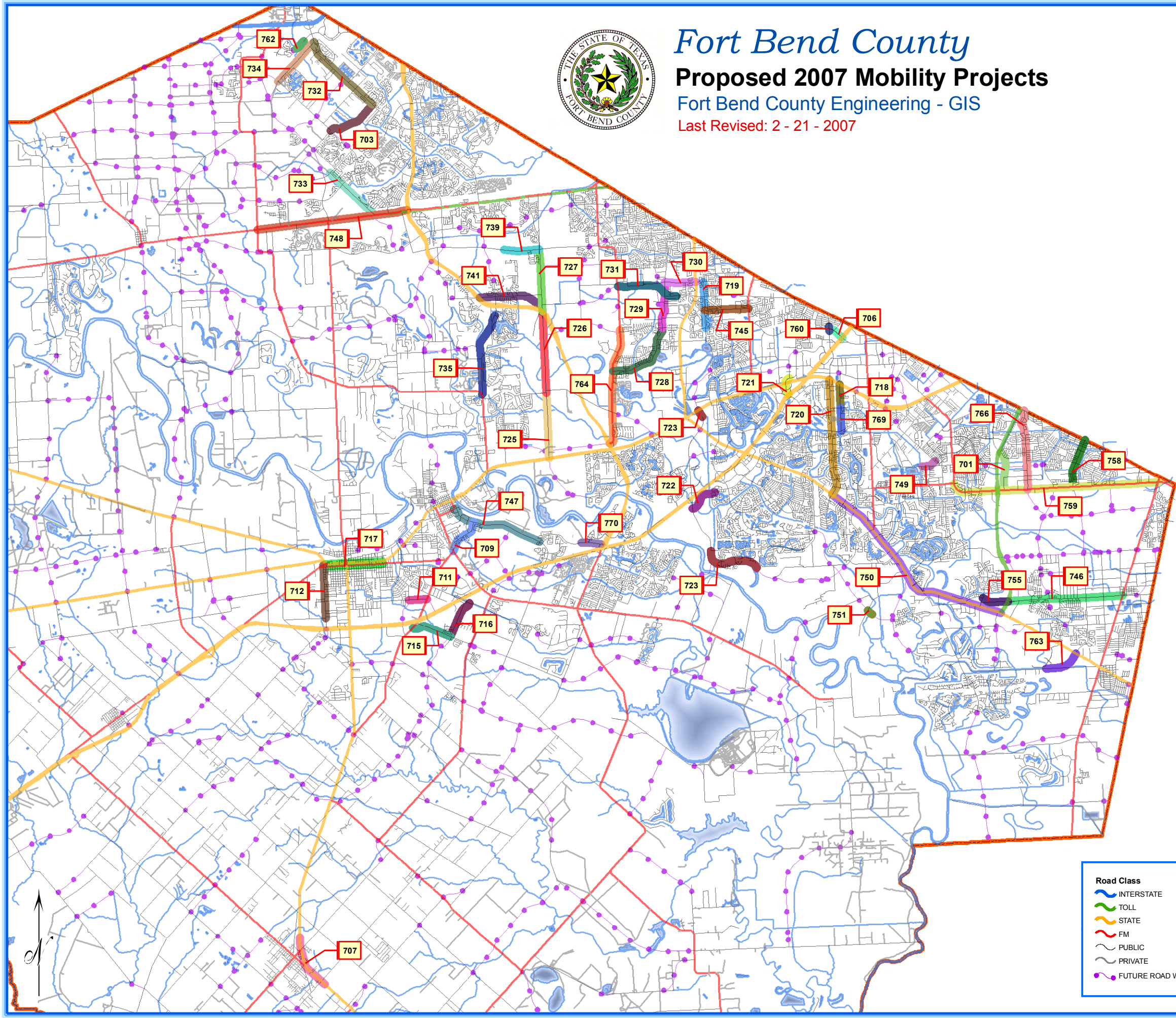


# Fort Bend County

## Proposed 2007 Mobility Projects

Fort Bend County Engineering - GIS

Last Revised: 2 - 21 - 2007



### Legend

- Mobility Projects - County and Municipality**  
**PROJ. NUM, PROJ. NAME, SPONSOR(S)**
- 701, FONDREN ROAD, CITY OF HOUSTON
  - 703, FALCON LANDING, FBC, DEVELOPER
  - 706, WEST AIRPORT, CITY OF MEADOWS PLACE, TxDOT
  - 707, SH 36 UTILITY RELOCATION, CITY OF NEEDVILLE
  - 709, GOLFVIEW DRIVE, CITY OF RICHMOND
  - 711, AIRPORT AVE, CITY OF ROSENBERG
  - 712, BAMORE ROAD, CITY OF ROSENBERG
  - 715, BRYAN ROAD, CITY OF ROSENBERG, DEVELOPER
  - 716, SPACEK, CITY OF ROSENBERG, DEVELOPER
  - 717, US 90A/ FM 1640 ONE WAY PAIRS, CITY OF ROSENBERG, TxDOT
  - 718, BRAND LANE, CITY OF STAFFORD
  - 719, BURNEY ROAD, FBC
  - 720, DULLES AVE, CITY OF SUGAR LAND, TxDOT
  - 721, DAIRY ASHFORD/SPUR 41 WIDENING, CITY OF SUGAR LAND
  - 722, LEXINGTON DRIVE, CITY OF SUGAR LAND, DEVELOPER
  - 723, UNIVERSITY BLVD, CITY OF SUGAR LAND
  - 725, HARLEM ROAD, FBC
  - 726, HARLEM ROAD, FBC
  - 727, HARLEM ROAD, FBC
  - 728, OLD RICHMOND, FBC
  - 729, OLD RICHMOND, FBC
  - 730, OLD RICHMOND, FBC
  - 731, WEST BELLFORT, FBC
  - 732, GREENBUSCH RD, FBC
  - 733, KATY GASTON ROAD, FBC
  - 734, KATY FLEWELLEN, FBC
  - 735, MASON ROAD, FBC, DEVELOPER
  - 739, BEECHNUT, FBC
  - 741, WEST BELLFORT, FBC
  - 745, FLORENCE, FBC
  - 746, TRAMMEL FRESNO, FBC
  - 747, RANSOM ROAD, FBC
  - 748, FM 1093, FBC
  - 749, INDEPENDENCE/ LEXINGTON BLVD, CITY OF MISSOURI CITY
  - 750, SH 6 ACCESS MGMT, CITY OF MISSOURI CITY
  - 751, SIENNA SPRINGS BLVD, CITY OF MISSOURI CITY
  - 755, TRAMMEL FRESNO, CITY OF MISSOURI CITY
  - 758, SOUTH POST OAK, CITY OF HOUSTON
  - 759, FM 2234, FBC, TxDOT
  - 760, KIRKWOOD, CITY OF MEADOWS PLACE
  - 762, KINGSLAND, CITY OF KATY
  - 763, SOUTH POST OAK, FBC, DEVELOPER
  - 764, FM 1464, FBC, TxDOT
  - 766, BLUE RIDGE RD, CITY OF HOUSTON
  - 769, BRAND LANE, FBC
  - 770, OLD RANSOM ROAD, CITY OF RICHMOND, DEVELOPER

- Road Class**
- INTERSTATE
  - TOLL
  - STATE
  - FM
  - PUBLIC
  - PRIVATE
  - FUTURE ROAD WAYS